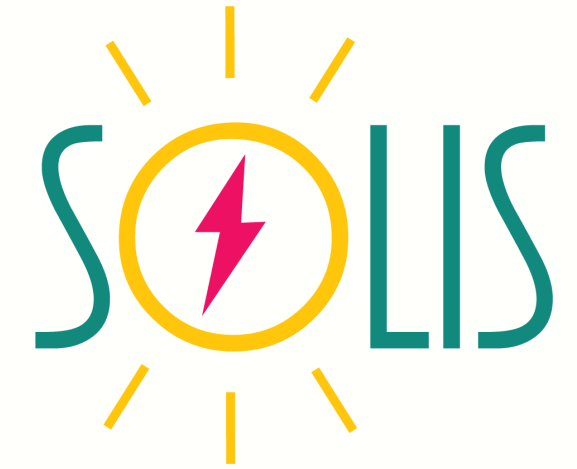


**HARNESS  
THE POWER**





# CONTENTS



WHY SOLIS

MISSION

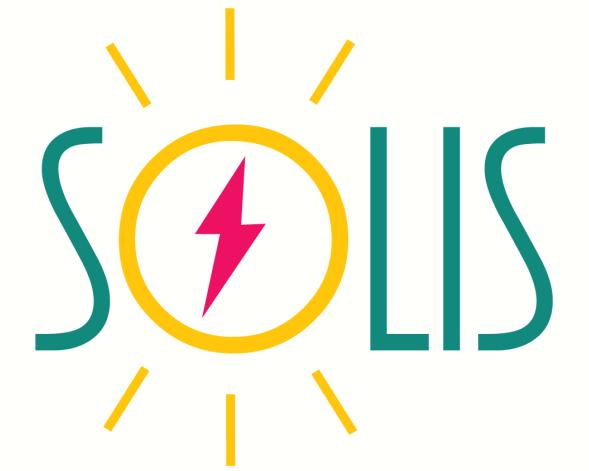
LEGAL STRUCTURE

ORGANIZATIONAL STRUCTURE

HUMAN RESOURCES

JOIN US





# WHY SOLIS?

- SUSTAINABILITY
- AFFORDABILITY
- CONVENIENT
- ECONOMICAL





**SOLIS**



# MISSION & VISION

THE FUTURE IS BRIGHT

## MISSION

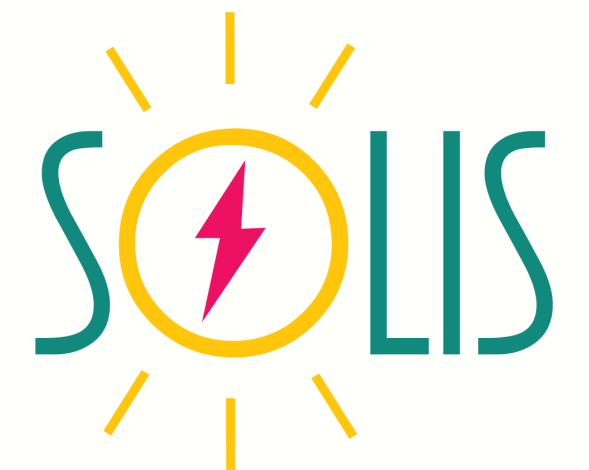
Solis strives to provide the best in affordable and sustainable energy solutions by developing cutting-edge solar technology through continued innovation and by providing world-class customer service.

## VISION

To be the worldwide leader in sustainable, portable solar technology.



# LEGAL STRUCTURE



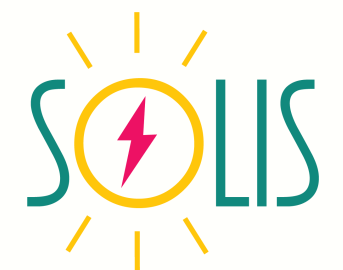


<https://www.canva.com/photos/MADCS-955yE-business-partners/>

# GP

## GENERAL PARTNERSHIP

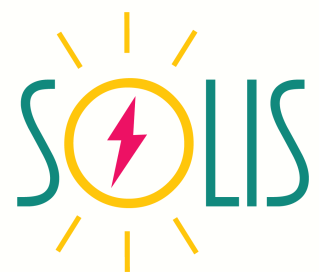
- Creation by actions of partners; formal agreement not required
- Maintenance is requirement-free
- Continuity defined by agreement or the dissociation of a partner
- Ownership is equal unless defined by an agreement
- Complete control unless otherwise defined by an agreement
- Partners are personally liable
- Pass-through tax entity



# LLC

## LIMITED LIABILITY COMPANY

- Combines general partnership and corporation
- Ease of creation and maintenance
- Entity is separate; dissolves by agreement terms or dissociation
- Ownership allocated by terms of the agreement or equally
- Member-Managed vs. Manager-Managed
- Limited Personal Liability
- Compensation: Partners vs. Corporation & Members vs. Employees

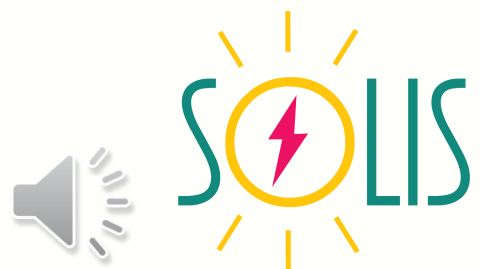




# CORPORATION

## C CORPORATION & S CORPORATION

- Formal structure and definition
- File articles of incorporation, receive state charter, appoint Board of Directors to take action
- Maintenance protects shareholder and third-party interests
- Corporations are continuous
- Shareholders = Owners
- Control is allocated between shareholders, directors, and officers.
- Liability to the extent of ownership
- Directors & Officers liable for "bad faith conduct"
- Taxes: C Corporation or S Corporation





# RECOMMENDATION

INCORPORATE SOLIS

- Formal, Defined Structure
- Support Growth and Development
- Protect IP and brand from changes in ownership
- Limited personal liability and options for degree of ownership/control



# ORGANIZATIONAL STRUCTURE

## FUNCTIONAL STRUCTURE

Organized by Line of Business



## MULTIDIVISIONAL STRUCTURE

Organized by Location and/or Product



# RECOMMENDATION

## HUMAN RESOURCES



[https://www.canva.com/photos/MAEEH\\_i-gXM-approachable-friendly-business-human-resource-manager-interviewing-new-hire-recruitment/](https://www.canva.com/photos/MAEEH_i-gXM-approachable-friendly-business-human-resource-manager-interviewing-new-hire-recruitment/)

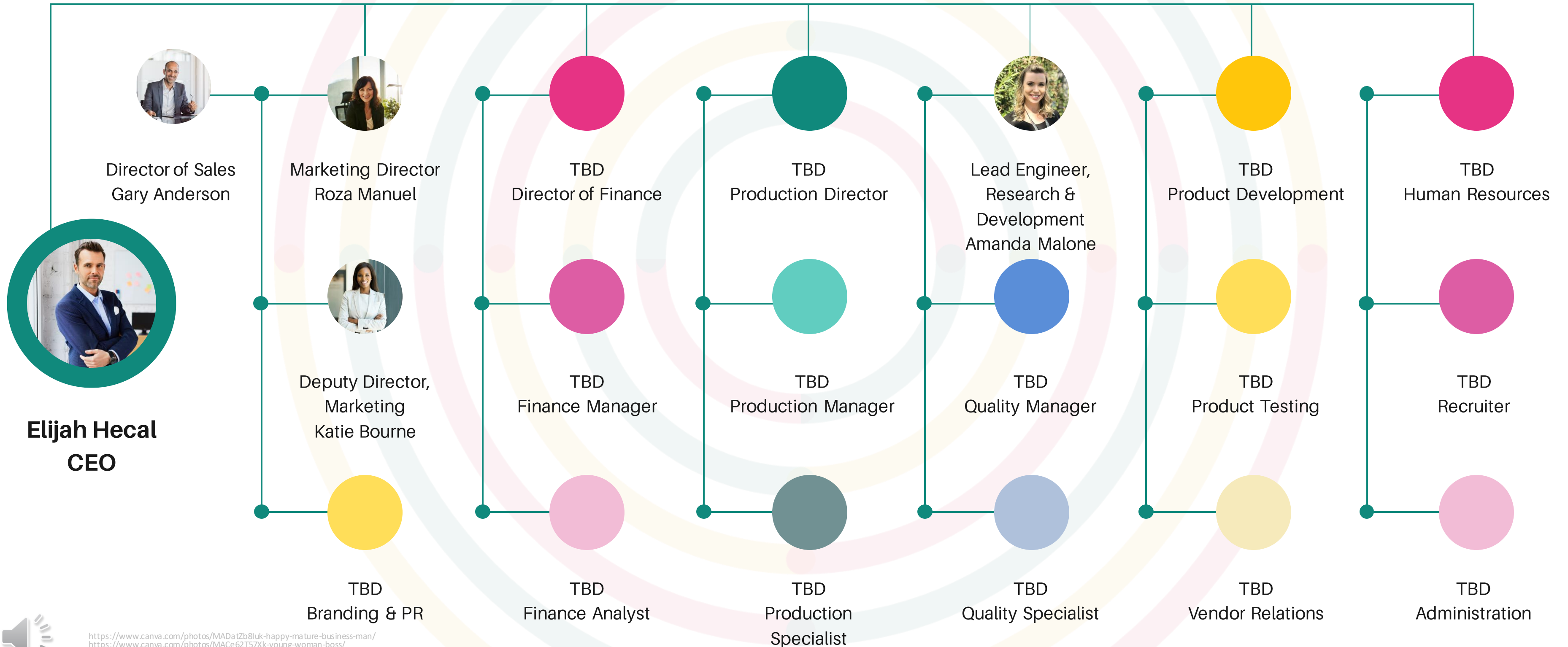
## INTERNAL HUMAN RESOURCES

- Company climate & culture
- Recruiting the right talent
- Compliance
- Standards of business conduct





# THE PROPOSED DREAM TEAM



# CONCLUSION

THE FUTURE IS BRIGHT

- **Dynamic product with global applications**
- **Solis branding, mission, vision, and goals**
- **Incorporate Solis & implement functional structure**
- **Develop internal HR to build the Solis Dream Team**





# JOIN US

SHARE YOUR ENERGY & RESOURCES

## Email

[amanda.malone@solis.com](mailto:amanda.malone@solis.com)

## Website

[solis.com](http://solis.com)





# SOLIS



## References

Edwards, John. (2021, September 19). *LLC vs. incorporation: which should I choose?* Investopedia. <https://www.investopedia.com/articles/personal-finance/011216/llc-vs-incorporation-inc-which-should-i-choose.asp>

English to Latin Dictionary. (n.d.) *Sun*. <https://latin.english-dictionary.help/english-to-latin-meaning-sun>

Stahl, M. J. (2004). Mission. In *Encyclopedia of health care management* (Vol. 1, pp. 370-371). SAGE Publications, Inc., <https://dx.doi.org/10.4135/9781412950602.n509>

University of Maryland Global Campus. (n.d.) *Business entities*. Document posted in UMGC MBA 630 9045 online classroom, archived at <https://learn.umgc.edu>

University of Maryland Global Campus. (n.d.) *Conference call for new venture with Gary and Roza*. Document posted in UMGC MBA 630 9045 online classroom, archived at <https://learn.umgc.edu>

University of Maryland Global Campus. (n.d.) *Creating an Organizational Structure*. Document posted in UMGC MBA 630 9045 online classroom, archived at <https://learn.umgc.edu>

University of Maryland Global Campus. (n.d.) *Outsourcing the HR Function*. Document posted in UMGC MBA 630 9045 online classroom, archived at <https://learn.umgc.edu>

Zday. (2021). *Corporate business presentation technology background uplifting 11 minutes*. Pond5. <https://www.pond5.com/royalty-free-music/item/125908900-corporate-business-presentation-technology-background-uplift>

(License Purchased)